

PETTIPAUG YACHT CLUB

53RD ANNUAL CHARLES BIRCH MEMORIAL TROPHY

Saturday, October 18th, 2025

SAILING INSTRUCTIONS

The notation '[NP]' in a rule of the Notice of Race (NoR) or Sailing Instructions (SIs) means that a boat may not protest another boat for breaking that rule. This changes RRS 60.1.

The notation [DP] in a rule in the NOR or SIs means that the penalty for a breach of that rule may, at the discretion of the jury, be less than disqualification. This changes RRS 60.5(c).

1. Conditions

- 1.1. All boats shall sail without spinnaker.

2. Communication

- 2.1. The Race Committee intends to monitor and communicate with competitors on marine VHF channel 1005 (former 05A) while on the water.
- 2.2. [NP] [DP] A boat that retires shall notify the Race Committee at the first reasonable opportunity.
- 2.3. Failure of the race committee to communicate by VHF radio or, failure of a competitor to hear a VHF transmission, shall not be grounds for redress.

3. Start Line, Finish Line, and Course

- 3.1. The Start Line and the Finish Line shall be between a staff flying an orange flag on the committee boat and the course side of a drop mark. This changes RRS Race Signals/Other Signals.
- 3.2. The Course:
 - 3.2.1. **From** the start to "C23" north of Calves Island. Leave mark to port.
 - 3.2.2. **To** start/finish line, pass between the committee boat and the pin.
 - 3.2.3. **To** "C33" north of Brockway Bar Channel. Brockway Island must be left to port. Leave mark to port.
 - 3.2.4. **To** start/finish line, pass between the committee boat and the pin. Brockway Island must be left to starboard.
 - 3.2.5. **To** "N26" in Essex Harbor. Leave mark to Port
 - 3.2.6. **To** finish.
- 3.3. [DP] Restricted Area: The designated mooring field of Essex Harbor is restricted. Except in the case of emergency boats may not enter this area while racing. This area shall be considered an *Obstruction*.

4. Starting

- 4.1. The start shall be in accordance with RRS 26.
- 4.2. There is one Class. The Class Flag will be Code Flag Alpha (swallowtail, white at hoist side, blue at fly side: **Α**).
- 4.3. About 15 seconds before the warning signal there will be 5 short sounds to alert the fleet.
- 4.4. Starting Signals

| | | | |
|-------------|---------|-----------------------|-----------------------|
| Warning | 1 Sound | Class Flag Up | 5 minutes until start |
| Preparatory | 1 Sound | Preparatory Flag Up | 4 minutes until start |
| One Minute | 1 Sound | Preparatory Flag down | 1 minute until start |
| Start | 1 Sound | Class Flag down | Start |

5. Time Limit

- 5.1. The first boat must finish by 1530.
- 5.2. The Finishing Window is 60 minutes after the first boat to finish, or 1600, whichever is earlier. Boats failing to sail the course within the Finishing Window, will be scored Did Not Finish (DNF) without a hearing. This changes RRS 35, A5.1, and A5.2.
- 5.3. Failure to finish within the time limit shall not be grounds for redress. This changes RRS 61.

6. Sailing Instructions

- 6.1. Sailing Instructions may be changed or amended until 0900 on the day of the race, however any change to the schedule shall be posted by 1700 on the day before the race. Changes will be posted online as per in NoR 3.2.
- 6.2. The Race Committee may change the Sailing Instructions on the water orally. If this is done code flag L will be flown from the committee boat prior to the warning signal. Such changes may be made directly or via VHF transmission.

7. Hearing Requests

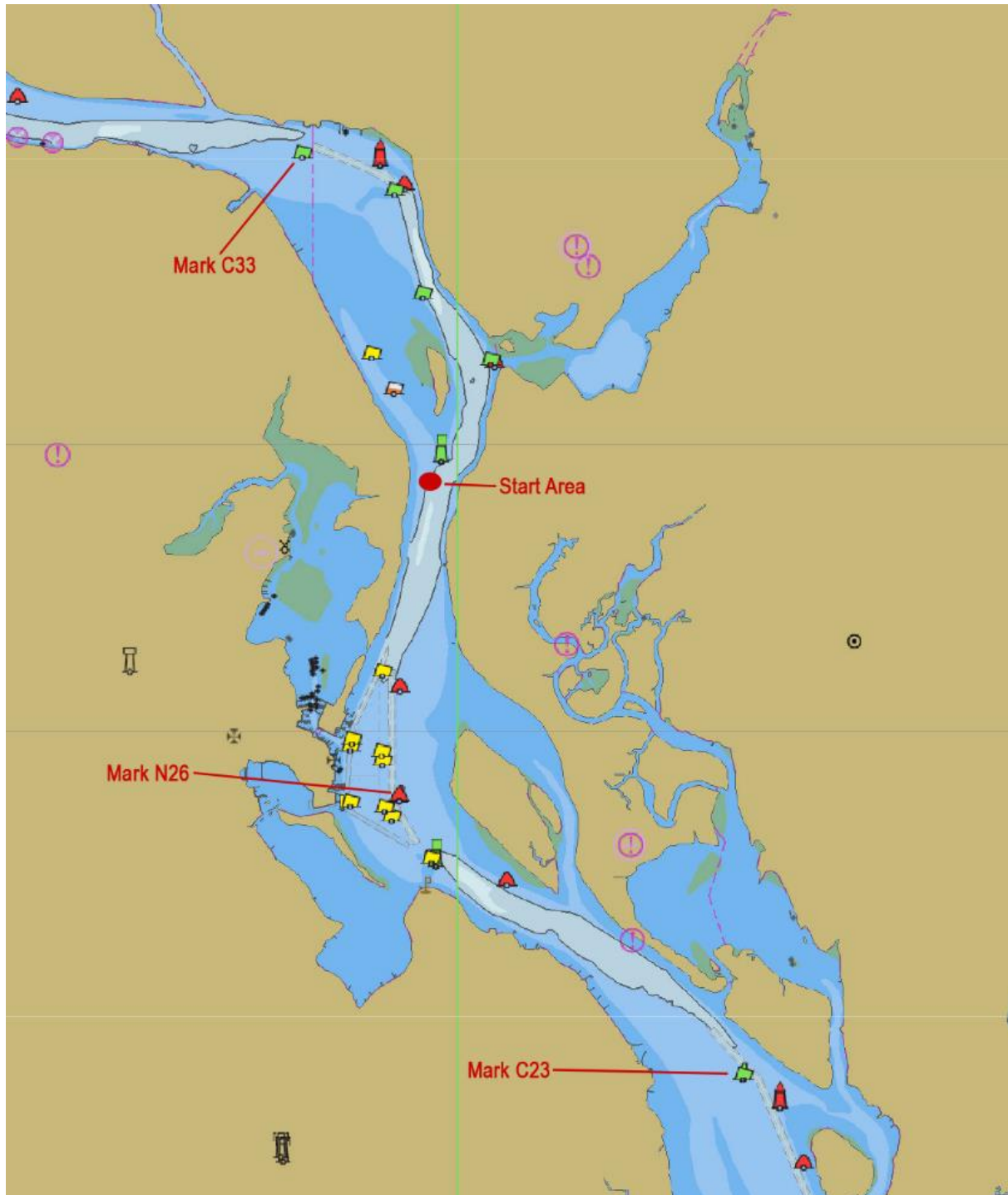
- 7.1. Any boat intending to protest must inform the Race Committee at the finish.
- 7.2. Protests must be filed in writing with the Protest Committee or the Race Committee within one hour of the finish time of the last boat or by 1700, whichever is earlier.
- 7.3. Hearing Notices will be posted online as described in the NoR 3.2.

CHARLES BIRCH MEMORIAL TROPHY

Mark Locations/Descriptions

Mark C33 and Mark C23 are green can navigation buoys

Mark N26 is a red nun navigation buoy



This chart shows approximate locations. It is not intended to be used for navigation.