

Pettipaug Yacht Club

Monthly One Design Class Regatta Racing Instructions

Eligibility: Races are open to all Senior and Junior members of PYC and registered guests. All boats and skippers must register with the Race Committee prior to the first race of the day, and attend the skippers meeting to be held at 1200Hrs.

Responsibility: It is the responsibility of the helmsman (skipper) of the yacht to see that she is seaworthy in hull, rig, and gear and that she is properly manned and sailed. Participation in any race sponsored or run by PYC constitutes an agreement by the skipper and crew that neither PYC nor its officers, board members, committee members, employees, agents or members shall be held responsible for any damages or injuries to yachts or persons which may be suffered from any cause during or related to PYC activities.

Classes: The race committee will conduct races for any class represented by three or more boats desiring to race.

Class Requirements: Each boat must meet the class specified safety and weight requirements unless otherwise specified by race committee. Single handed racing is permitted.

Rules: The current rules of US Sailing Association and of the various classes, except as modified herein, shall govern all races. The 720 degree turns penalty shall be used to absolve a boat for all non-disputed part 2 rule infractions. The penalty for touching any mark on the course is a 360 degree penalty turn (rule 31 applies)

Protests: Per US Sailing Association rules (part 5): Sailors must clearly verbally notify the boat they plan to protest immediately after the incident, so as to give the protested boat the opportunity to take penalty turns to absolve their infraction. The protest committee shall consist of the race committee members for that day, plus one other member who is designated PYC protest committee appointee and who is not an interested party, but present that day and available to serve.

Starting: The first race shall start approximately at 1300Hrs. Please arrive early to rig. Except for unusual circumstances, no race will start later than 1600Hrs. Normally 5-6 races will be run each day of racing given appropriate wind and weather conditions. A short awards ceremony and cookout will normally follow the racing.

The average time for a (once around) race should be 15-20 minutes. For each race, we will use the 3 minute starting sequence.

3 minutes: 3 long blasts **2 minutes:** 2 long blasts **1 ½ minutes:** 1 long blast, 3 short blasts

1 minute: 1 long blast **30 seconds:** 3 short blasts **20 seconds:** 2 short blast **10 seconds:** 1 short blast

5 seconds to 1 second: 1 short blast for each second **Start:** 1 long blast

Recalls: Specific boats identified early over the line shall be hailed verbally by the race committee. General recall: 5 short blasts plus verbal announcement by the race committee. A new 3 minutes starting sequence shall be initiated.

Finishing: 1 short blast or whistle shall be sounded for the winner of each race. All other boats finishing shall receive 1 short blast or whistle blow upon crossing the finish line.

Time limit: A race shall be cancelled if no boat has finished 30 minutes after the races start and may be cancelled earlier at the discretion of the race committee. Certain special races may have longer limits which will be announced prior to the race. Boats finishing after 1 hour, or earlier if announced by the race committee prior to the race, shall be scored as DNF.

Spinnakers: Not allowed during the monthly one design races, however “whisker poles” are permitted.

Courses: THE START/FINISH LINE IS CLOSED except when starting or finishing. The start/finish line shall be between a flag on the race committee boat and a buoy. Both of these are designated as obstructions. Sailors shall follow Racing Rules of Sailing accordingly. The race committee boat can be set on either end of the start/finish line at the discretion of the race committee.

All sailors are expected to stay clear of the start/finish line promptly after finishing and to stay clear of boats in the class preparing for the next race.

Scoring: The US Sailing Association Low Point Scoring System will be used. (Appendix A4.1 and A4.2 of the racing rules)

Finishing Place	Points
-----------------	--------

1	1
---	---

2	2
---	---

3	3
---	---

4	4
---	---

And so on.

DNS, DNF, DSQ = the number of boats in fleet plus one.

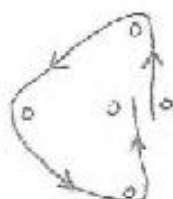
The boat with the lowest score wins. All races are to be counted. Ties as determined under rules A7 and A8.1.2

Monthly One Design Class Regatta Race Instructions (P.3)

COURSES

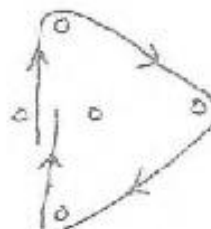


WP



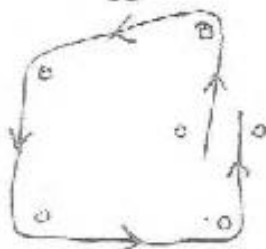
PORT TRIANGLES

WS



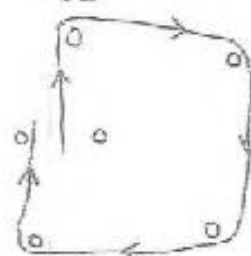
STARBOARD TRIANGLES

YP



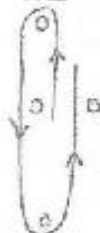
PORT RECTANGLES

YS



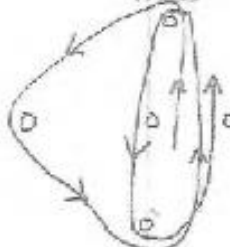
STARBOARD RECTANGLES

WL



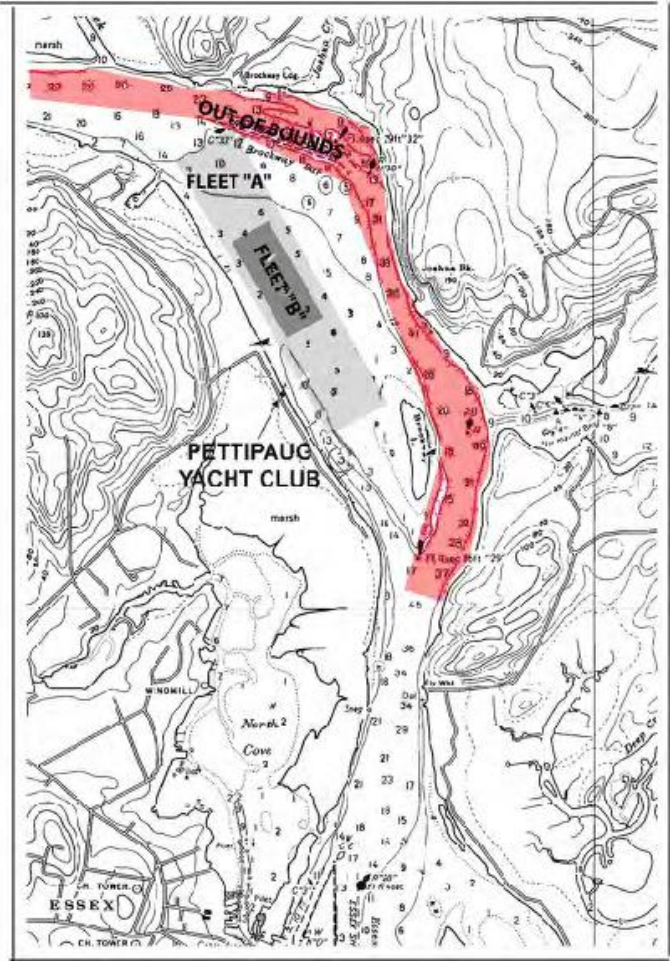
WINDWARD-LEEWARD

WPL



OLYMPIC
(PORT TRIANGLES + WINDWARD-LEEWARD)

Monthly One Design Class Regatta Race Instructions (P.4)



Pettipaug Yacht Club
2018 One Design Regatta
Classes & Course Areas